



# *Setup a live stats feed in NCAA LiveStats using StatBroadcast Listener*

This guide will walk you through configuring NCAA LiveStats scoring applications to connect to StatBroadcast Listener and send live stats to StatBroadcast.

You will need the latest versions of NCAA LiveStats and StatBroadcast Listener installed prior to proceeding. You will also need to create an event in StatBroadcast to transmit to.

## 1. Open your existing Game or load your Game from a Game Key

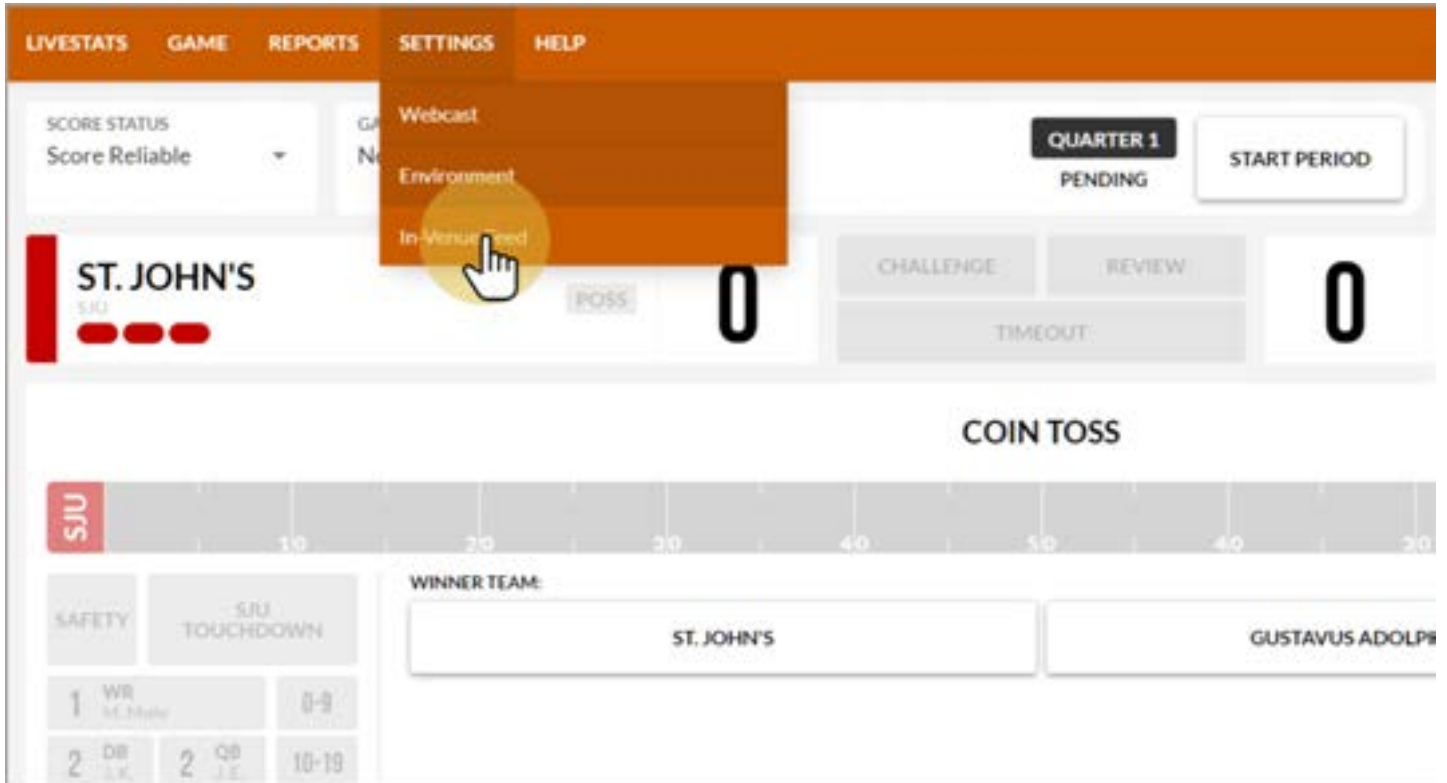
If you are loading from a Game Key, you will need to complete all of the NCAA LiveStats Game setup steps first, including setting team abbreviations and active rosters.

Note: you'll need to select a game to proceed with setup. If you do not have a current game or a game key, you can create a manual game or use the built-in test game.



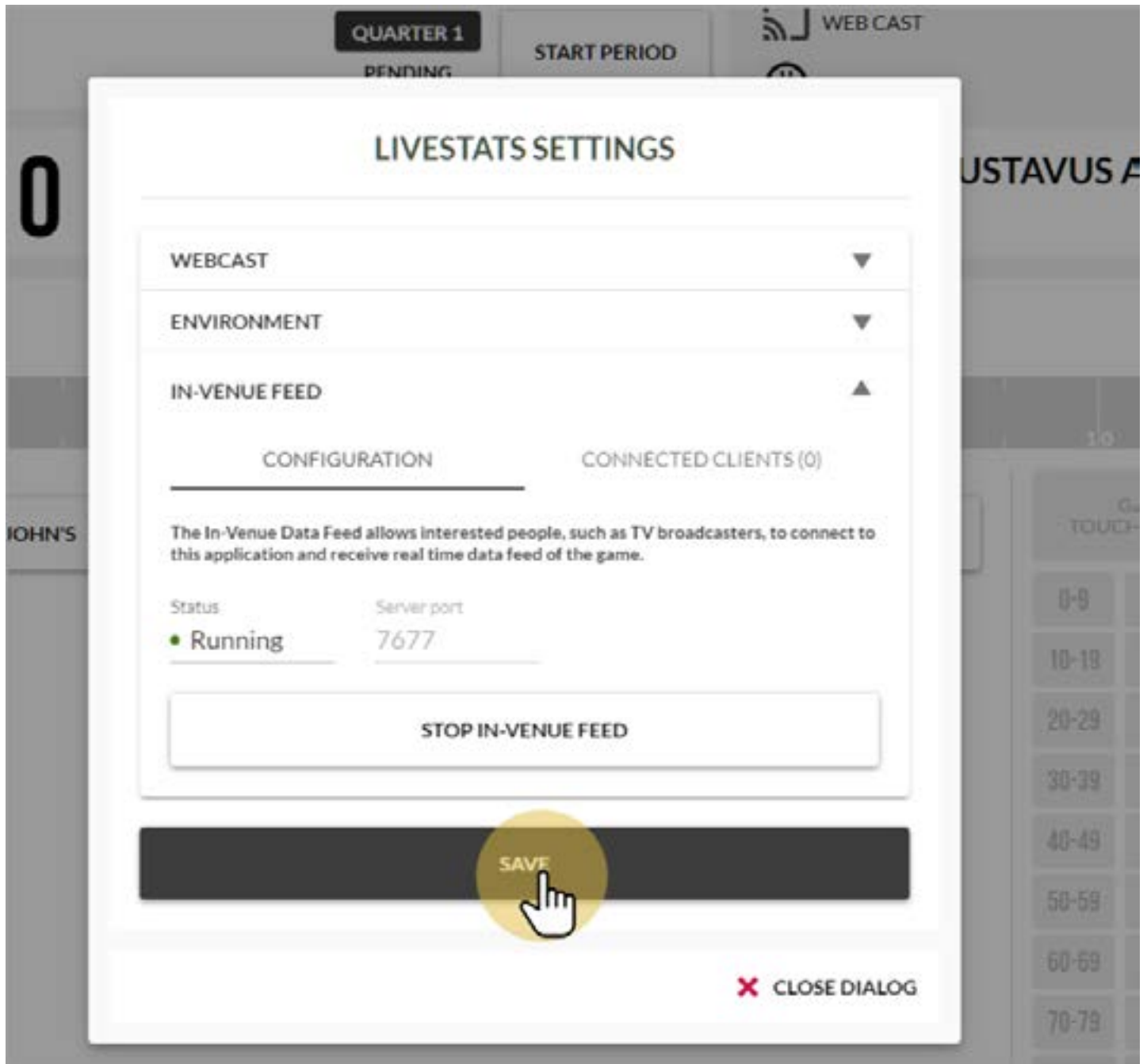
## 2. Click on the Settings menu and choose In-Venue Feed

Note: You must be inside of a game to access the In-Venue feed. It cannot be turned on from the previous Game Select screen.



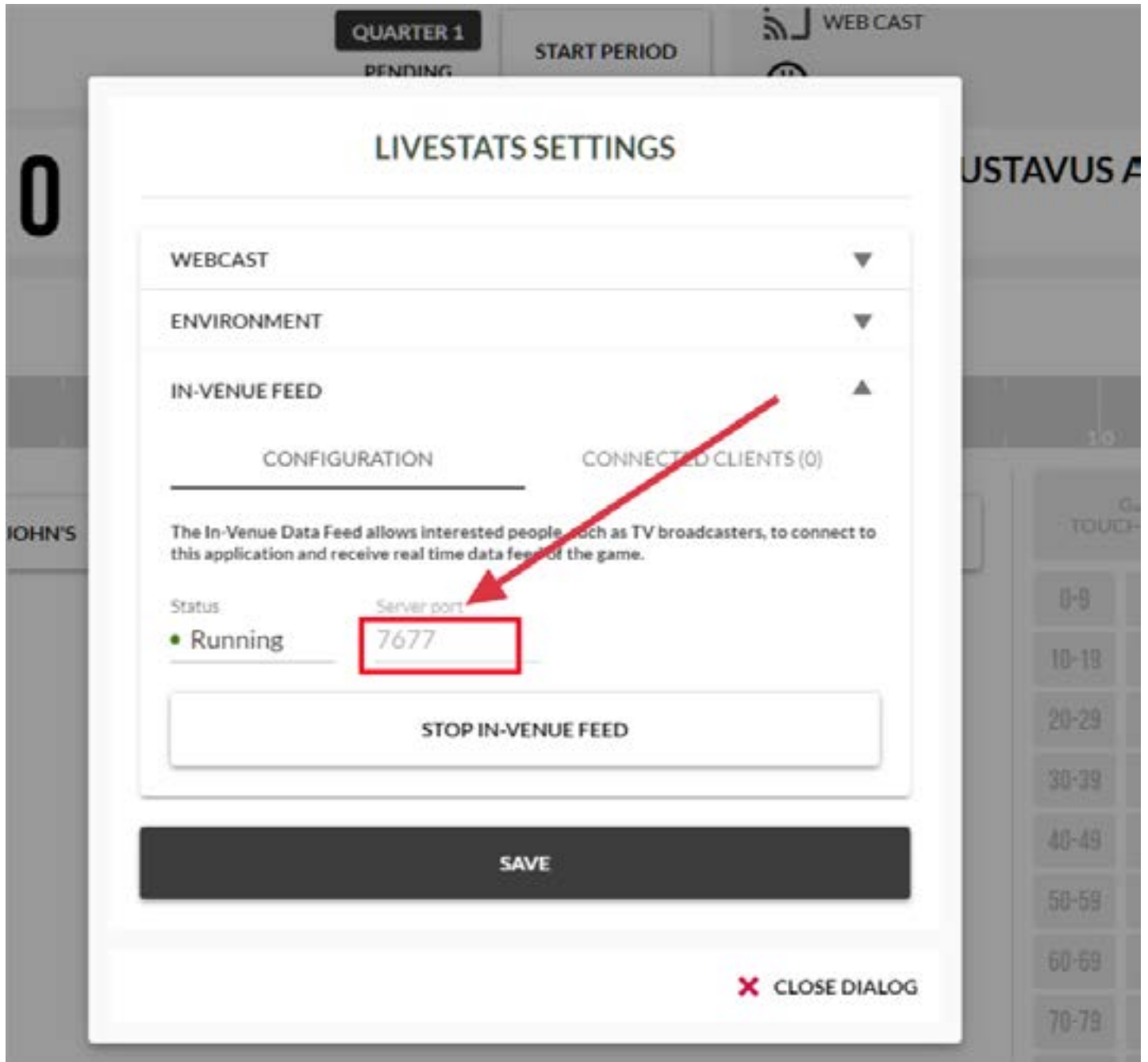
### 3. Make sure that the In-Venue Feed is started and close the Dialog

If the Status is not listed as 'Running', click the white button in the middle labeled 'Start In-Venue Feed'



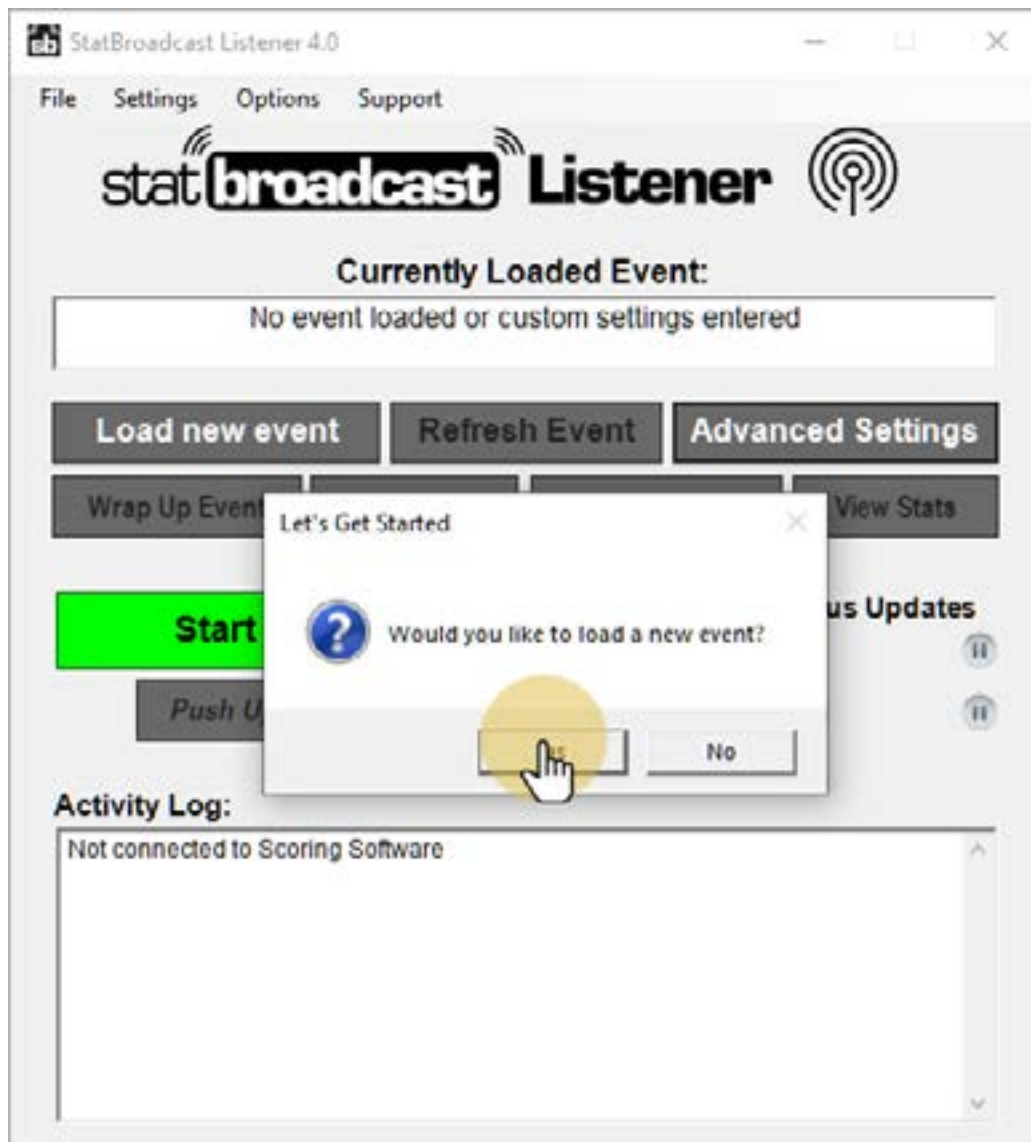
### 3.1 Port Number

The default port number is **7677**. If you have changed yours or a different number is being displayed, please make note of it (you will need this later).

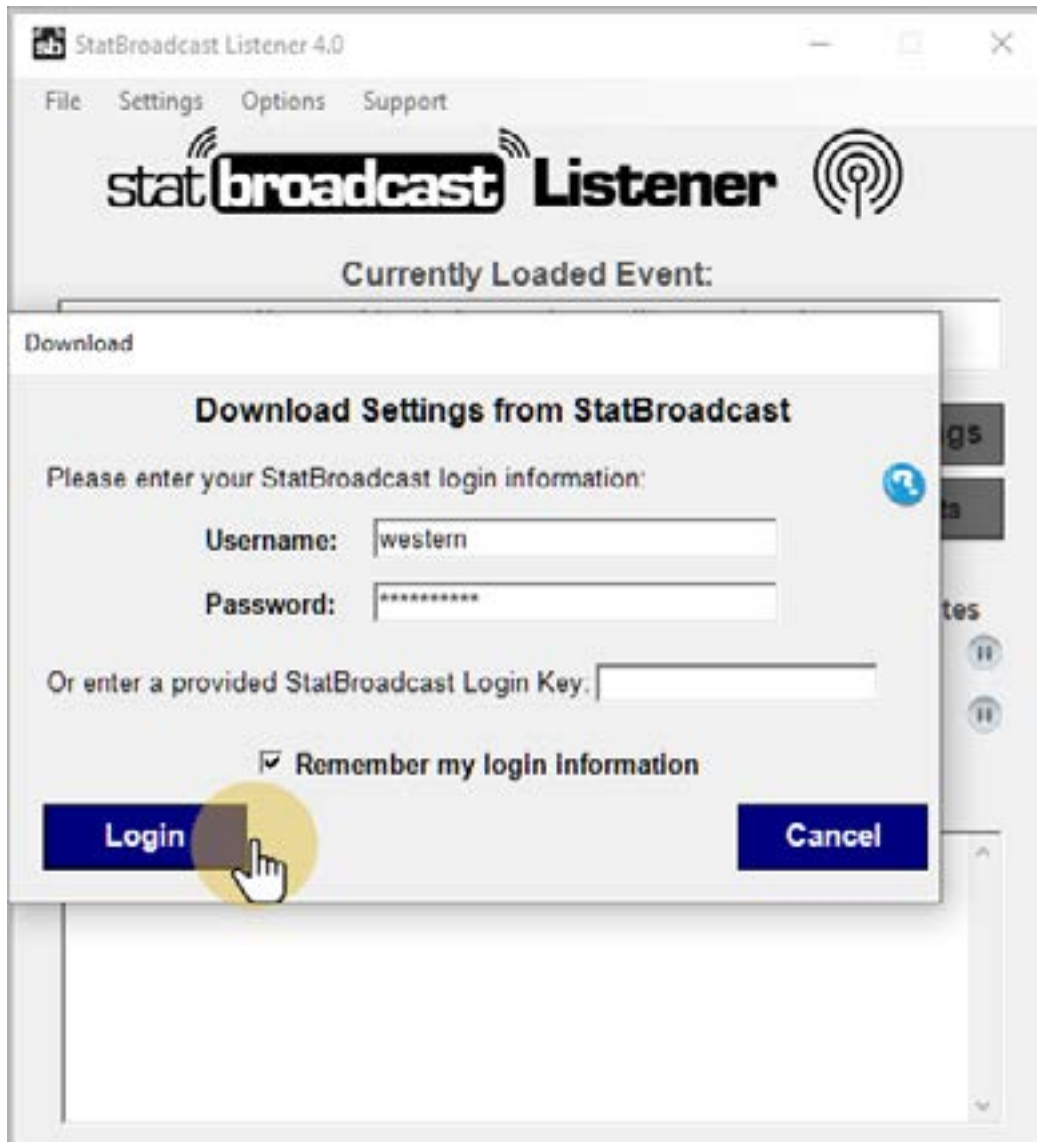


## 4. Launch StatBroadcast Listener

When prompted, click Yes to Load an event

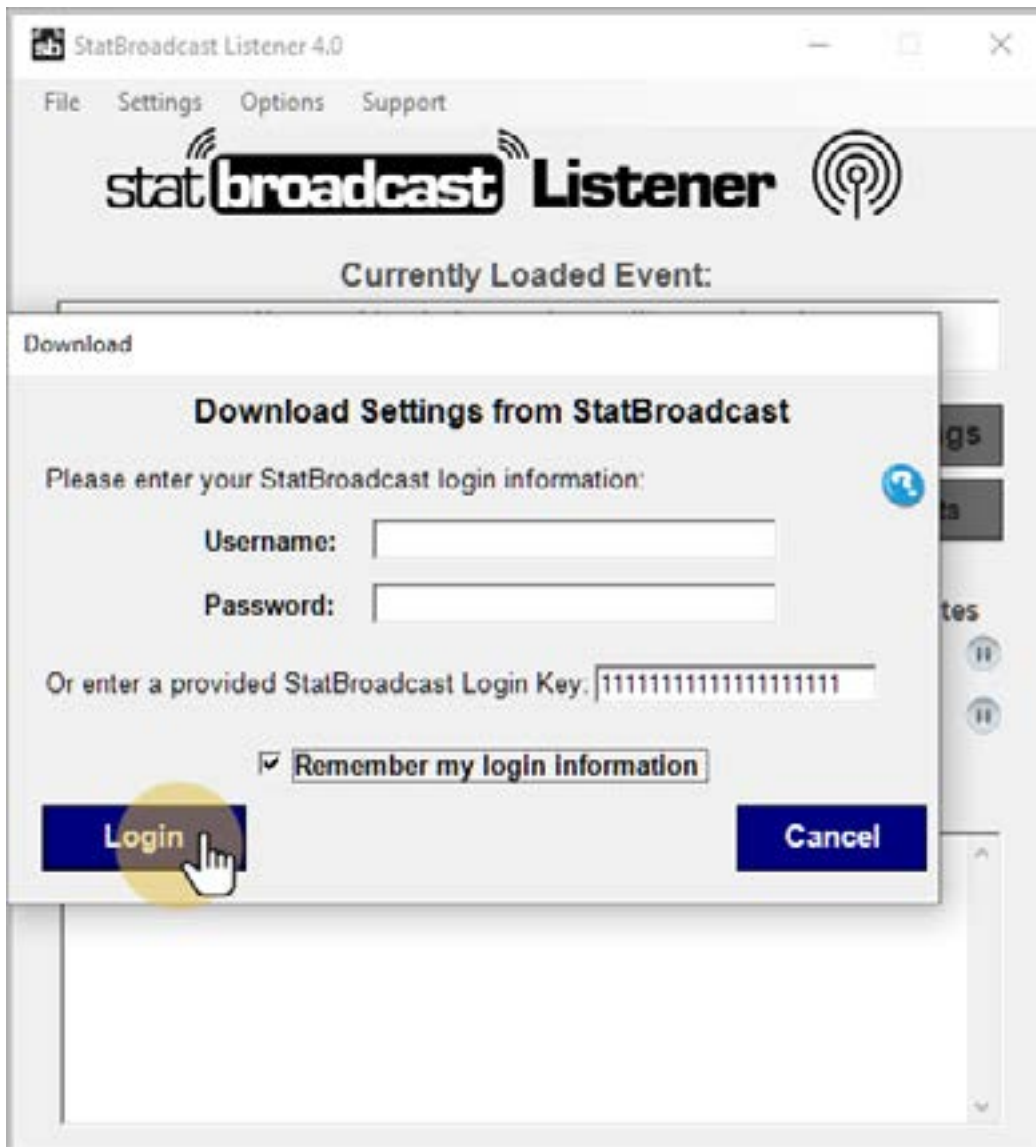


## 4.1 Log in with your StatBroadcast account



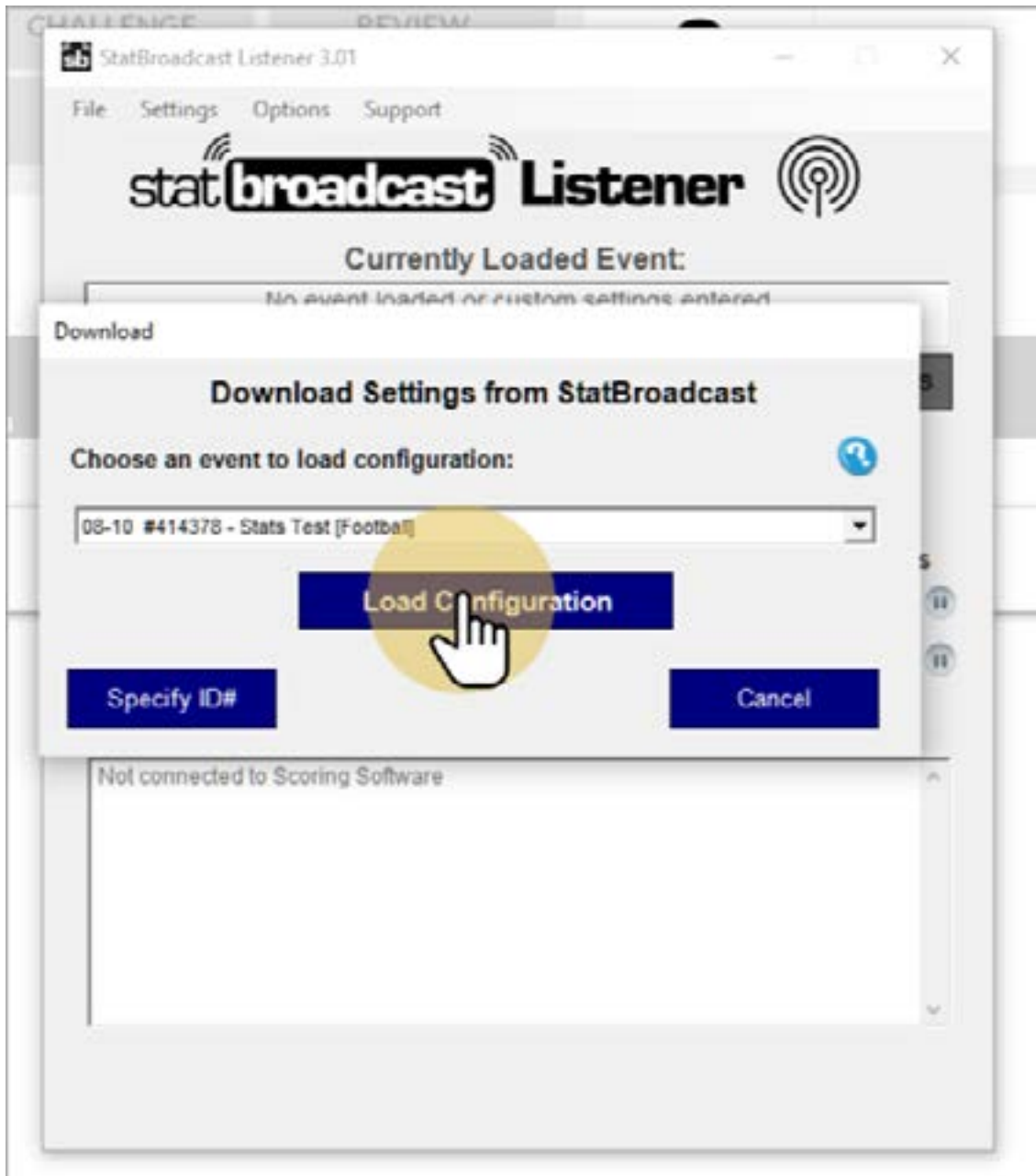
## 4.2 1b. If you have been provided with a Login Key instead, please enter that in the field.

Login keys are numerical and 20 digits in length.

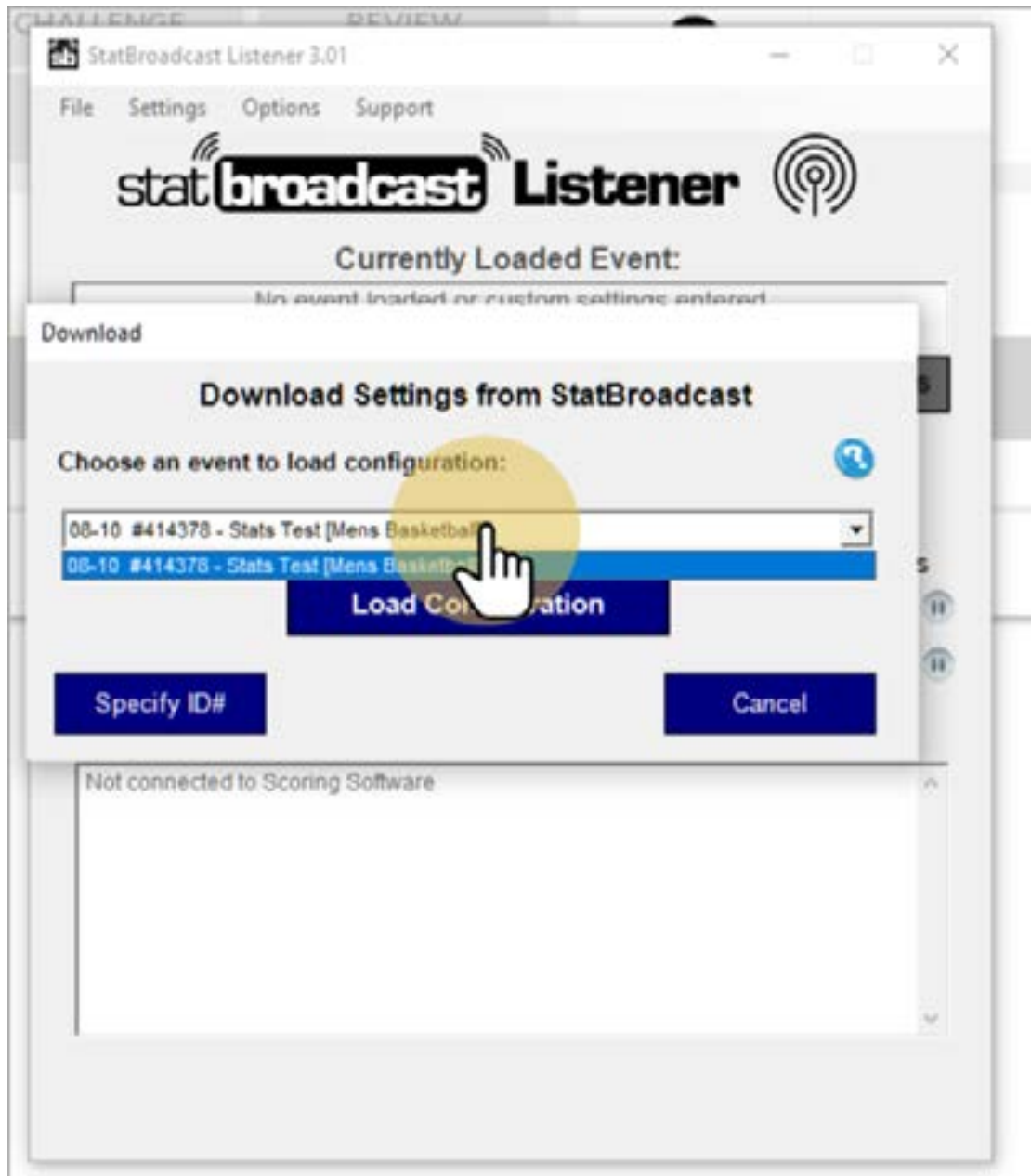




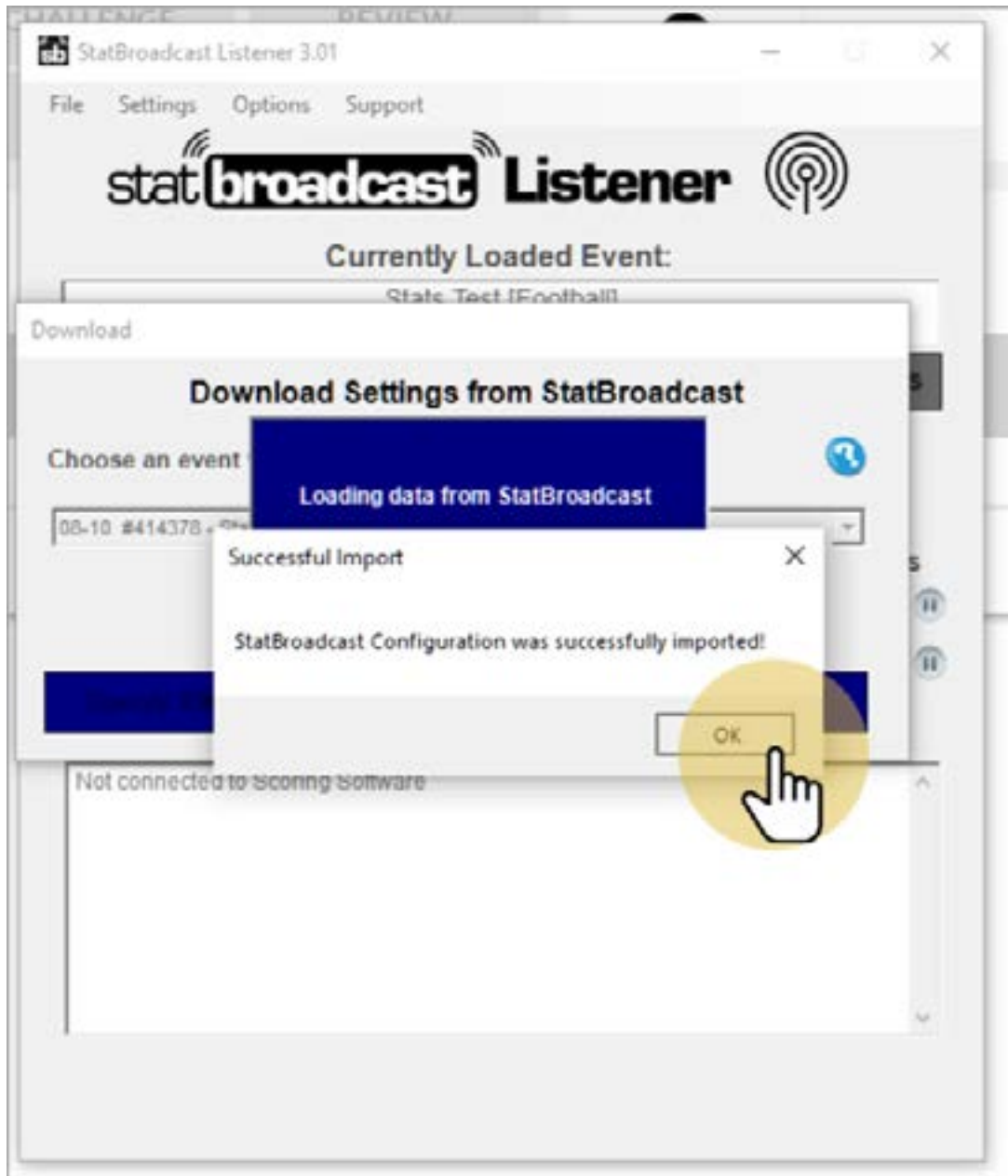
## 5. Click 'Load Configuration'



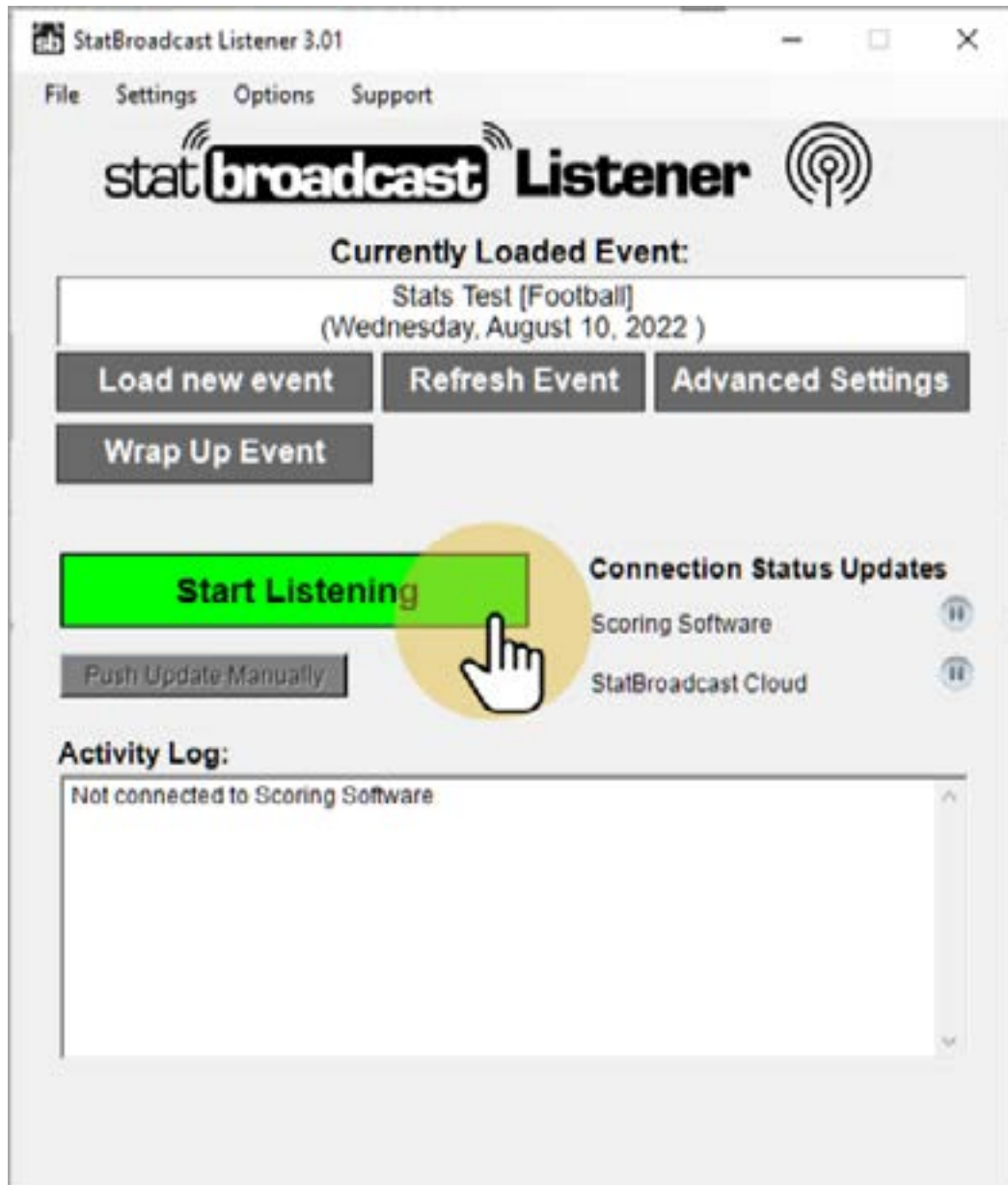
## 5.1 Select your event from the List



## 5.2



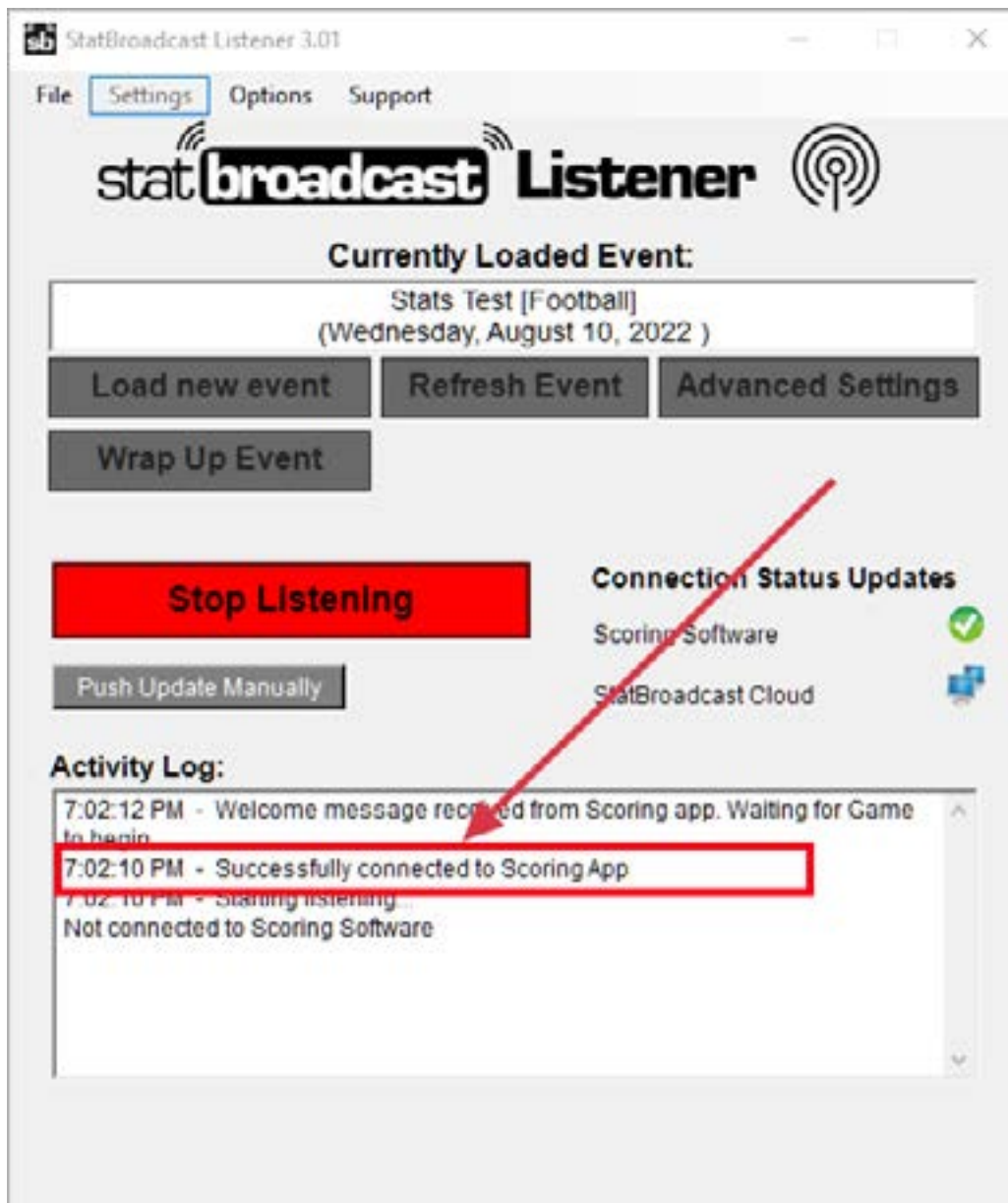
## 6. Click 'Start Listening'



### 6.1

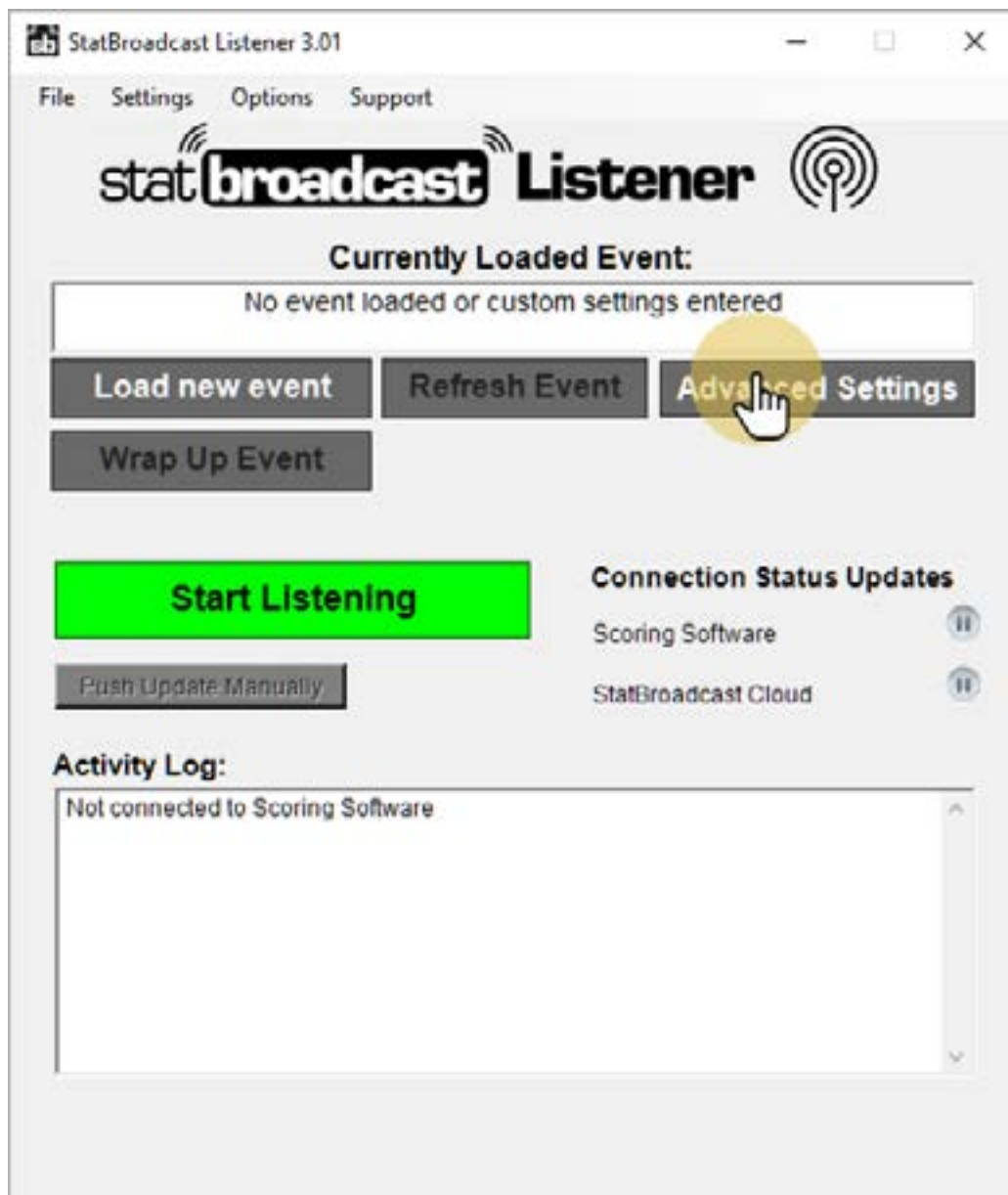
Once Listener has connected to NCAA LiveStats, you'll see the 'Successfully connected' message

If you receive a message like ' No connection could be made because the target machine actively refuse', please check to make sure that the Port Number in NCAA LiveStats matches the port number listed in Listener (see next step)



## 6.2 Different Port Number

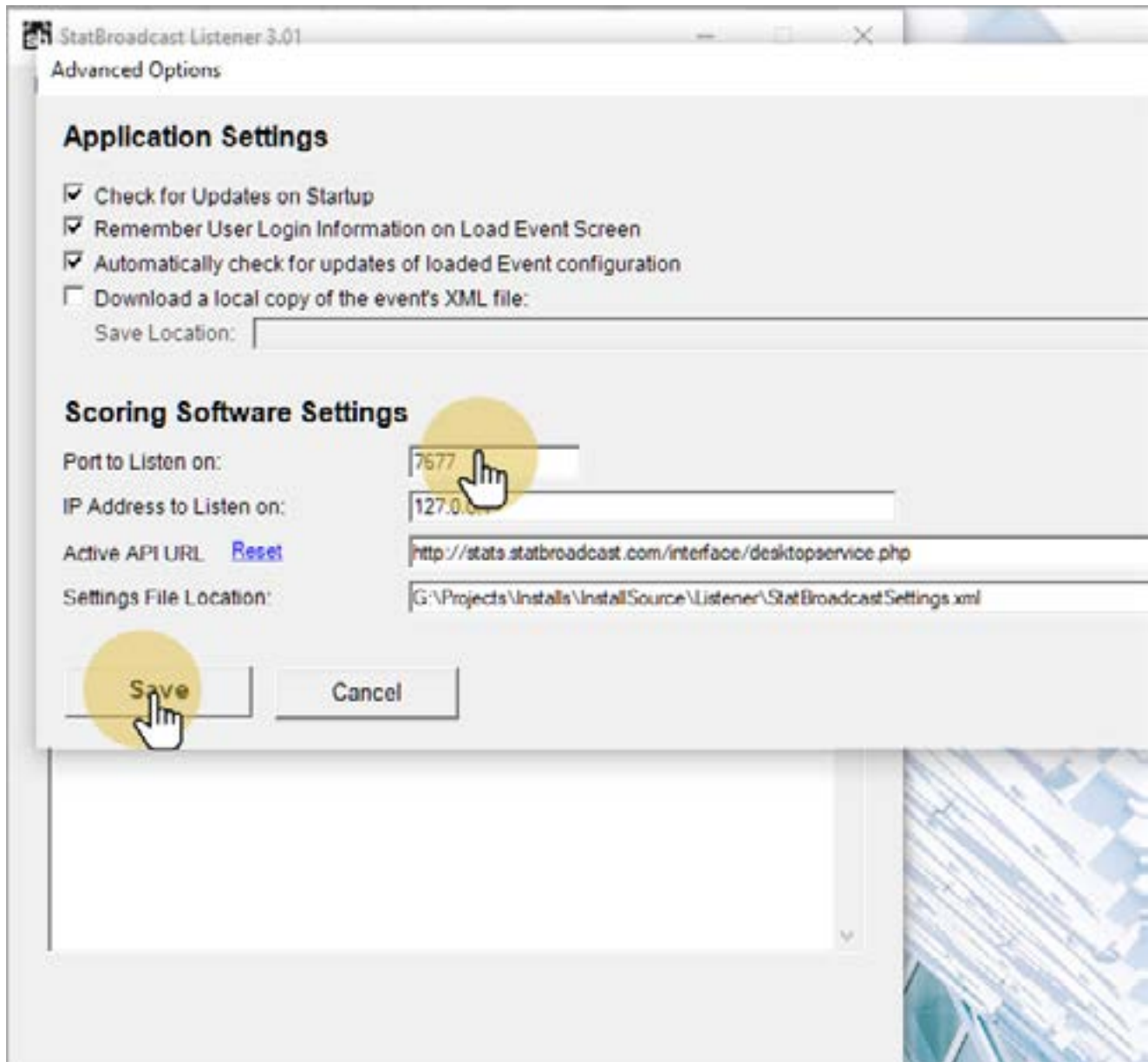
If your port number was not 7677 in previous Step 3, you'll need to press 'Stop Listening' (if Listening has started) and adjust it in Advanced Settings.



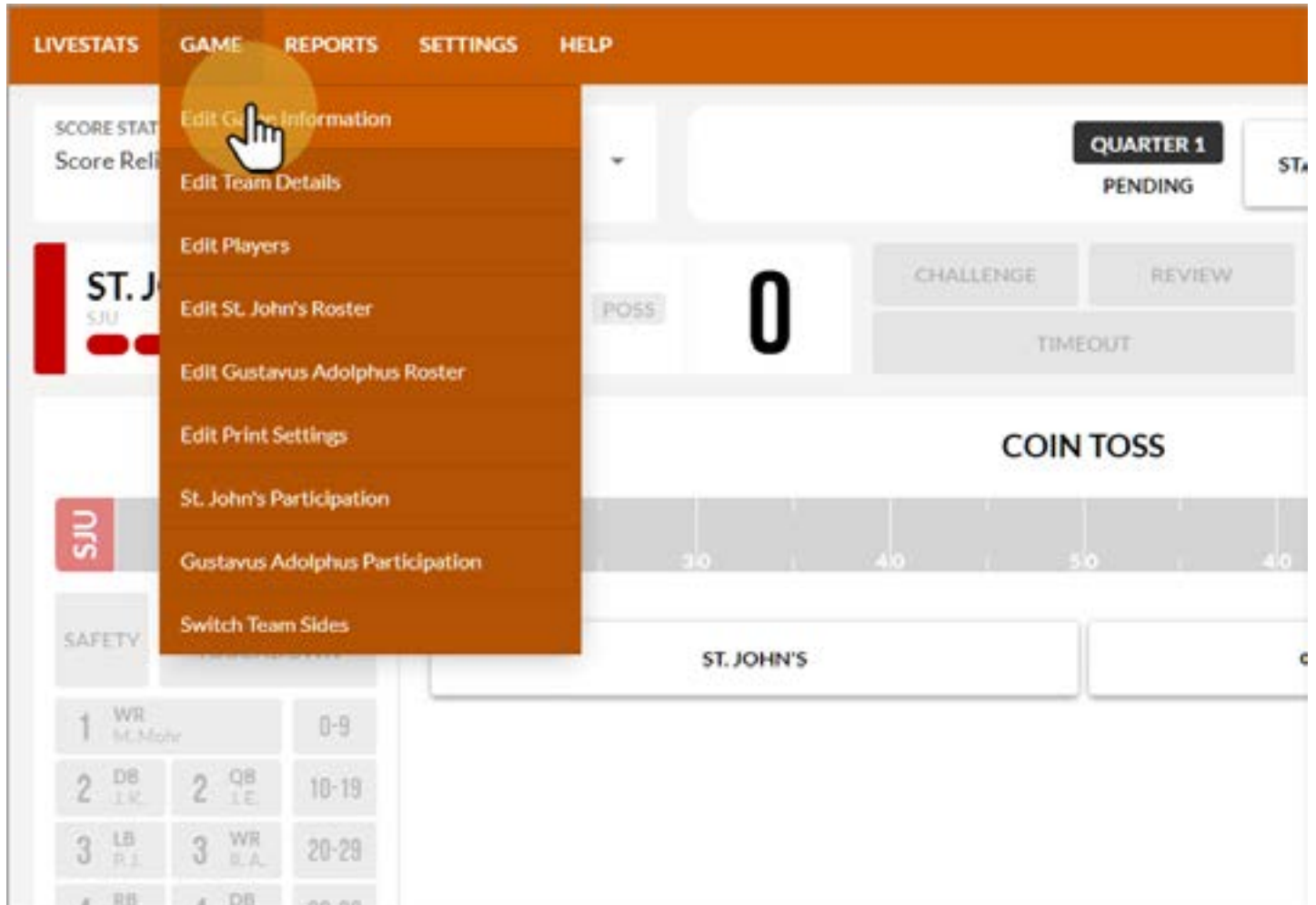


## 6.3 Change the port number

Use the port number that was listed on the NCAA LiveStats In-Venue settings screen and click Save.



## 7. Return to NCAA LiveStats and select 'Edit Game Information' from the 'Game' menu





## 7.1 Update any field on this screen to generate a pregame file

After you have made your changes, you can go back to this screen and undo them if necessary.

Start a new game by entering all information below  
\*Denotes mandatory fields

Game Number: 100000002      Competition: NCAA      Period Length: 15

Date & Time: 02:23 PM 08/10/2022      Attendance: 8290      Conference Game:

Venue: Clemens Stadium      Neutral Venue:       Wind Direction:

Field:       City: Collegeville      Wind Speed (mph):

State: Minnesota      Country:

Temperature (F): 163.4      Weather Conditions: Rain

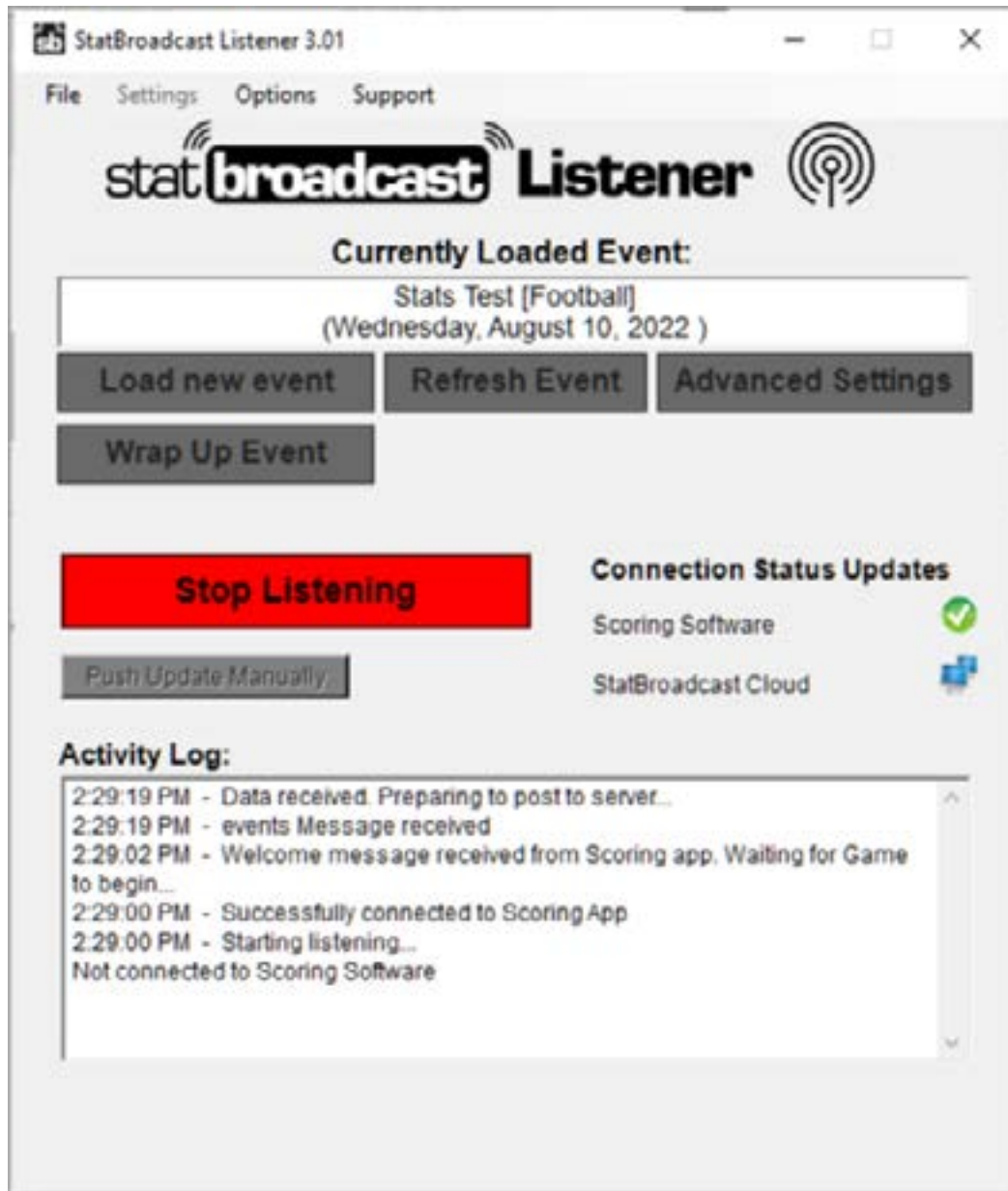
\* OFFICIALS

FIRST NAME	LAST NAME	ROLE
Jason	Berg	Referee
Jason	Weber	Umpire
Donald	Bratton	Head Linesman

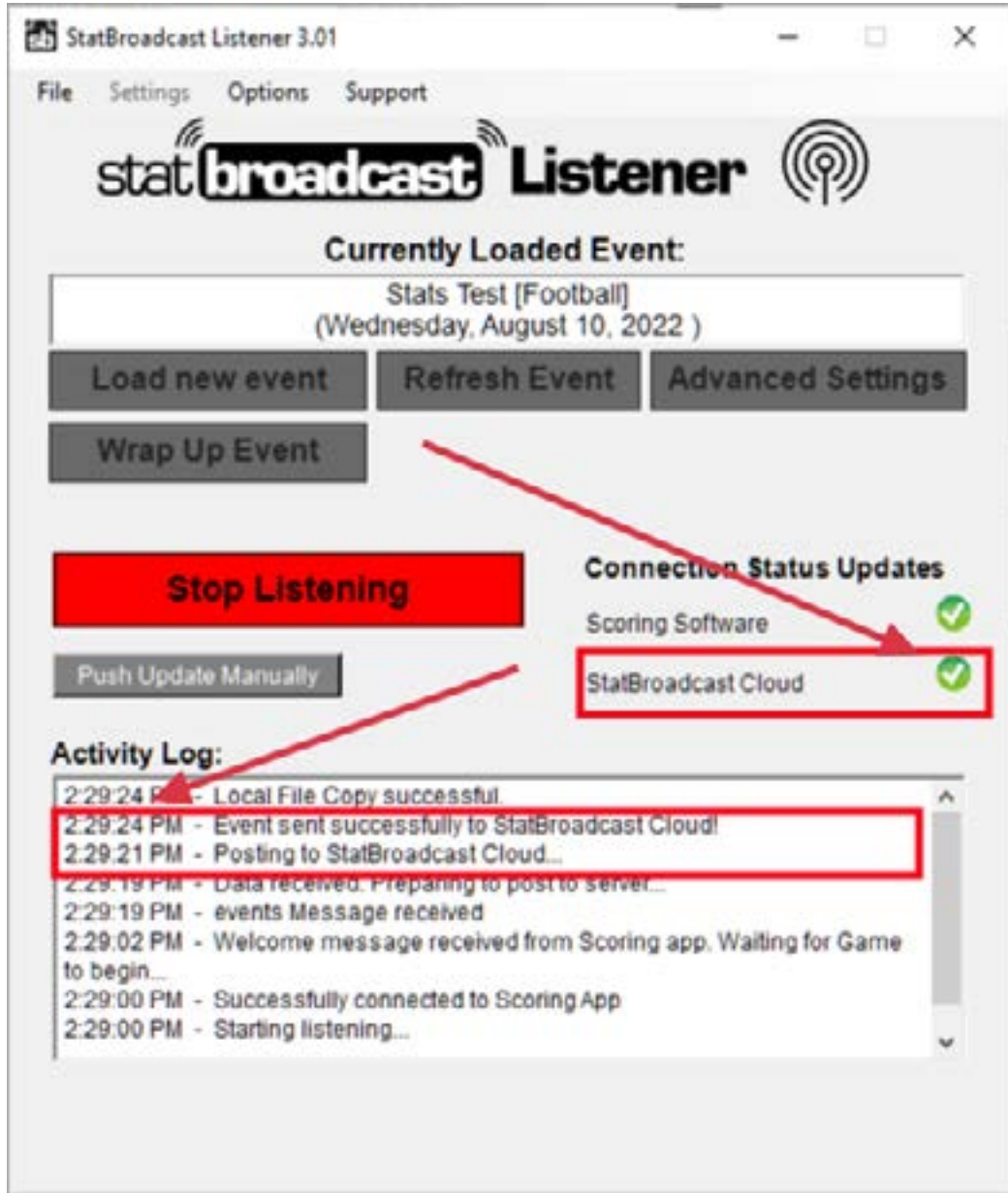
## 7.2 Save changes

The screenshot shows a web interface for 'NCAA LIVESTATS FOR FOOTBALL'. At the top right, there are window control icons (minimize, maximize, close). Below this is a navigation bar with buttons for 'Team 2 Roster', 'Print Settings', 'Close', and 'Save & Confirm'. The 'Save & Confirm' button is highlighted with a yellow circle and a hand cursor icon. Below the navigation bar, the text 'information below' is visible, followed by several form fields: 'Period Length' with the value '15', 'Conference Game' with an unchecked checkbox, 'Wind Direction' with a dropdown menu, and 'Wind Speed (mph)' with an empty text input field.

## 8. Return to Listener

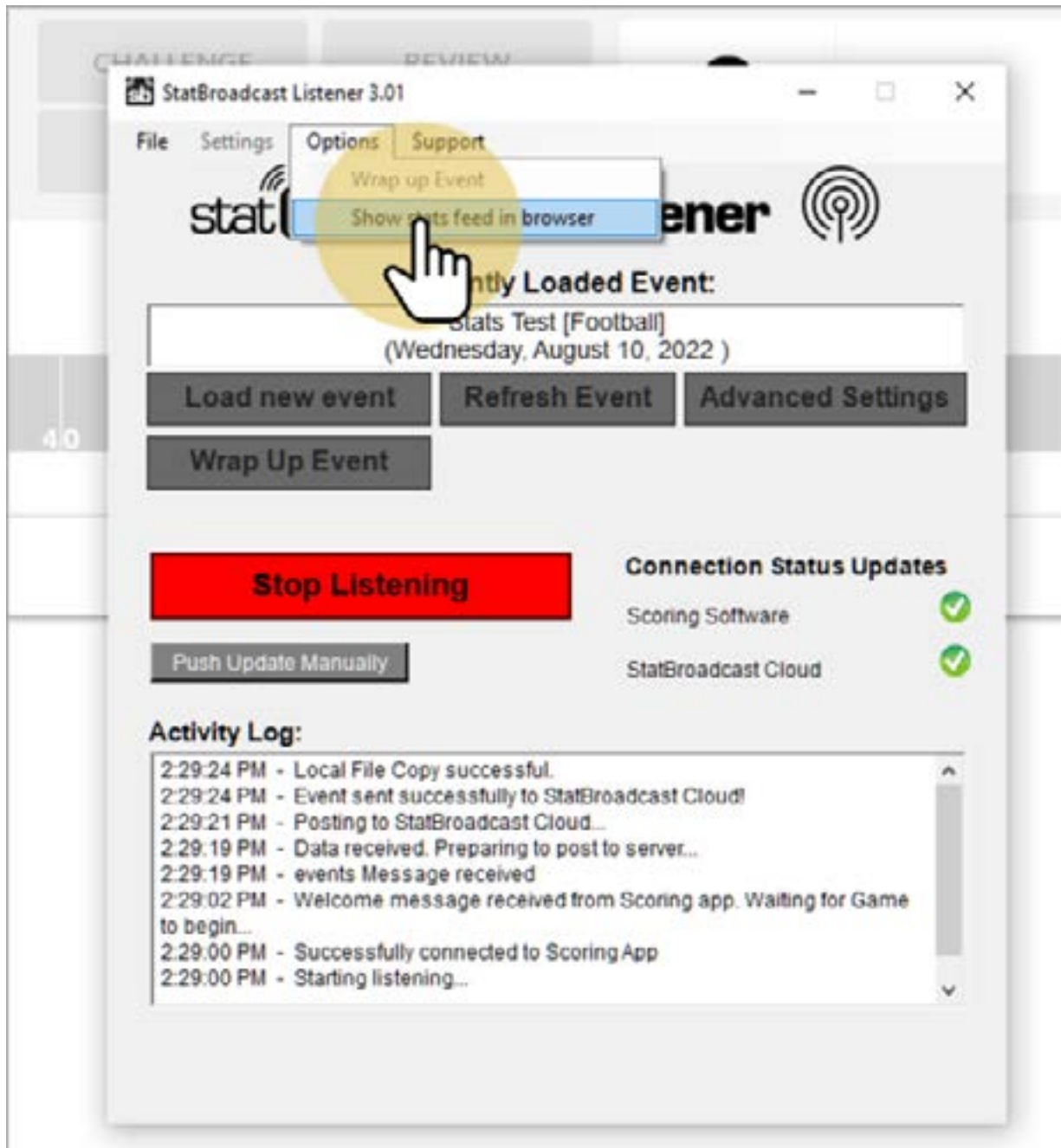


## 8.1 Confirm that data was received by Listener



## 8.2 Click on 'Show Stats feed in browser' under Options

On newer versions, you can also click the 'View Stats' button in the center.



### 8.3 Confirm that stats feed is now showing

